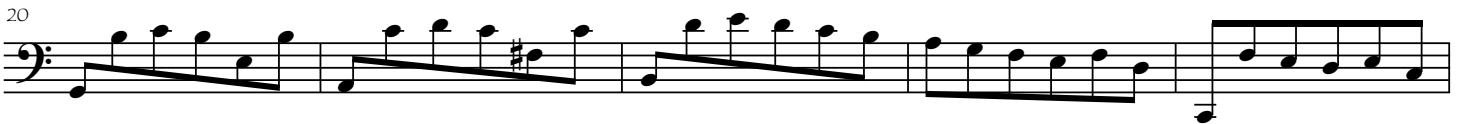


Bach: Cello Suite III: Courante and Sarabande: CLEAN VERSIONS

COURANTE

by cellofun.eu



2 Bach: Cello Suite III: Courante (cont) and Sarabande: CLEAN VERSIONS

61



Measure 61 of the Courante (cont) in G major, Cello Suite III. The notation is in bass clef with a key signature of one sharp (F#). It features a rhythmic pattern of eighth and sixteenth notes.

66



Measure 66 of the Courante (cont) in G major, Cello Suite III. The notation is in bass clef with a key signature of one sharp (F#). It features a rhythmic pattern of eighth and sixteenth notes.

71



Measure 71 of the Courante (cont) in G major, Cello Suite III. The notation is in bass clef with a key signature of one sharp (F#). It features a rhythmic pattern of eighth and sixteenth notes.

77



Measure 77 of the Courante (cont) in G major, Cello Suite III. The notation is in bass clef with a key signature of one sharp (F#). It features a rhythmic pattern of eighth and sixteenth notes, ending with a double bar line and repeat sign.

SARABANDE



Measure 1 of the Sarabande in G major, Cello Suite III. The notation is in bass clef with a key signature of one sharp (F#) and a 3/4 time signature. It features a slow, steady rhythm with dotted notes.

5



Measure 5 of the Sarabande in G major, Cello Suite III. The notation is in bass clef with a key signature of one sharp (F#) and a 3/4 time signature. It features a slow, steady rhythm with dotted notes.

9



Measure 9 of the Sarabande in G major, Cello Suite III. The notation is in bass clef with a key signature of one sharp (F#) and a 3/4 time signature. It features a slow, steady rhythm with dotted notes and a trill (tr) in the final measure.

13



Measure 13 of the Sarabande in G major, Cello Suite III. The notation is in bass clef with a key signature of one sharp (F#) and a 3/4 time signature. It features a slow, steady rhythm with dotted notes and a change in time signature to 2/4.

17



Measure 17 of the Sarabande in G major, Cello Suite III. The notation is in bass clef with a key signature of one sharp (F#) and a 3/4 time signature. It features a slow, steady rhythm with dotted notes.

21



Measure 21 of the Sarabande in G major, Cello Suite III. The notation is in bass clef with a key signature of one sharp (F#) and a 3/4 time signature. It features a slow, steady rhythm with dotted notes, ending with a double bar line and repeat sign.