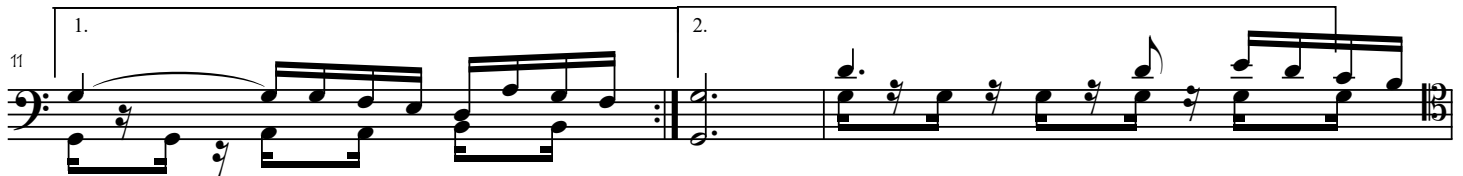
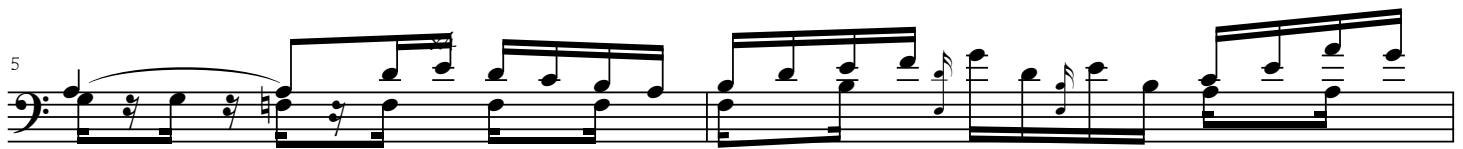
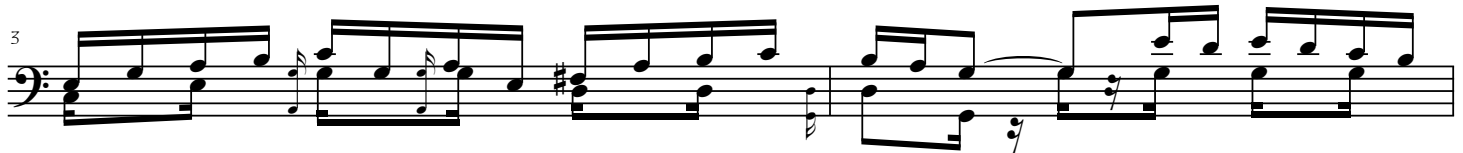


# Bach: Violin Solo Sonata II: Movt III: Andante

FOR CELLO: ORIGINAL KEY: CLEAN PERFORMANCE VERSION

by cellofun.eu

Andante



2 Bach Violin Solo Sonata II: Movt III: Andante: FOR CELLO: ORIGINAL KEY: CLEAN PERFORMANCE VERSION

13

Musical notation for measures 13 and 14. The key signature has one sharp (F#) and the time signature is 3/4. The music features a steady eighth-note accompaniment in the left hand and a melodic line in the right hand.

15

Musical notation for measures 15 and 16. The melodic line continues with some phrasing slurs and accents.

17

Musical notation for measures 17 and 18. The accompaniment remains consistent with eighth notes.

19

Musical notation for measures 19 and 20. Measure 20 features a melodic phrase with a flat (Bb) and a slur.

21

Musical notation for measures 21 and 22. The melodic line has a slight upward contour.

23

Musical notation for measures 23 and 24. Measure 24 includes a flat (Bb) and a sharp (F#) in the melodic line.

25

Musical notation for measures 25 and 26. Measure 26 is the first ending of a first ending bracket, marked with a '1.' above the staff.

27

Musical notation for measures 27 and 28. Measure 28 is the second ending of a first ending bracket, marked with a '2.' above the staff. The piece concludes with a double bar line and a bass clef.