

# Fast Playing: Repertoire Excerpts

compiled by cellofun.eu

SCALIC WITH SHIFTING AND STRING CROSSINGS

practice all excerpts with a variety of bowings: slurred, separate (including spiccato) and mixed

Tchaikovsky: Romeo and Giulietta

Two systems of musical notation for the cello part of Tchaikovsky's Romeo and Juliet. The first system is in bass clef with a key signature of one sharp (F#) and a 2/4 time signature. It begins with a forte (*f*) dynamic and contains several measures of sixteenth-note passages with fingerings (2, 4, 3, 1, 1, 3, 4) and accents. The second system continues the piece, featuring a change to 3/4 time and various fingerings (1, 4, 1, 2, 1, 2, 1, 2, 1, 2, 1).

Mozart: Symphony 35: Movt IV: Presto

Two systems of musical notation for the cello part of Mozart's Symphony 35, Movement IV. The first system is in bass clef with a key signature of one sharp (F#) and a 2/4 time signature, starting with a piano (*p*) dynamic. It features sixteenth-note passages with fingerings (1, 2, 1, 1, 2, 3, 1, 2, 4, 1, 2). The second system continues with similar rhythmic patterns and fingerings (2, 4, 1, 2, 1, 2, 1, 2, 1, 2, 1).

Mozart: Overture to Marriage of Figaro

Two systems of musical notation for the cello part of Mozart's Overture to The Marriage of Figaro. The first system is in bass clef with a key signature of one sharp (F#) and a 2/4 time signature, starting with a piano (*p*) dynamic. It features sixteenth-note passages with fingerings (4, 2, 4, 2). The second system continues with similar rhythmic patterns and fingerings (2, 1, 2, 1).

Tchaikovsky: Symphony n° 3: Movt III

Two systems of musical notation for the cello part of Tchaikovsky's Symphony No. 3, Movement III. The first system is in bass clef with a key signature of one sharp (F#) and a 2/4 time signature, starting with a piano (*p*) dynamic. It features sixteenth-note passages with fingerings (1, 1, 1, 1, 4, 1, 4, 2, 1, 1, 1, 1). The second system continues with similar rhythmic patterns and fingerings (1, 1, 1, 1, 4, 2, 1, 1, 1, 1, 2, 1).

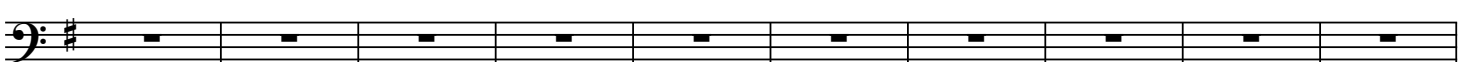
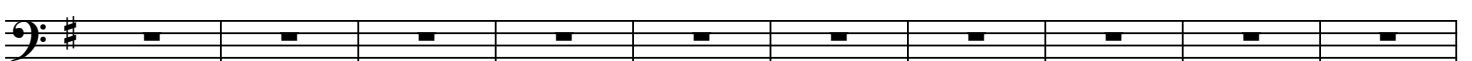
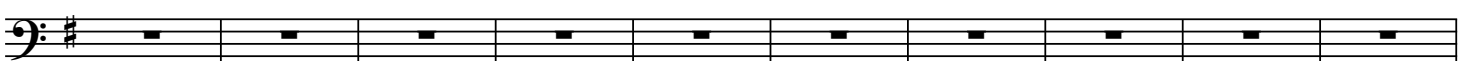
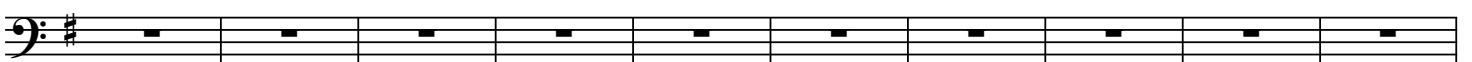
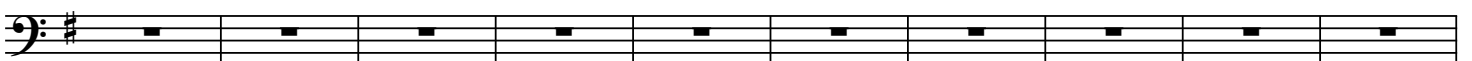
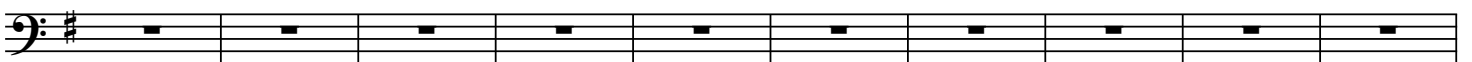
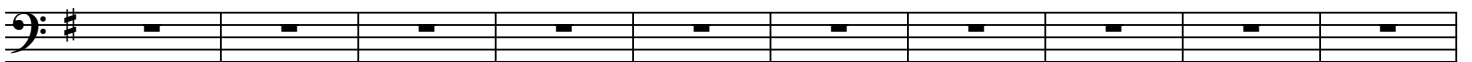
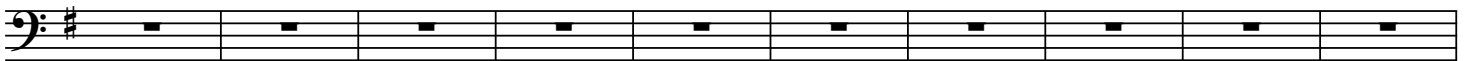
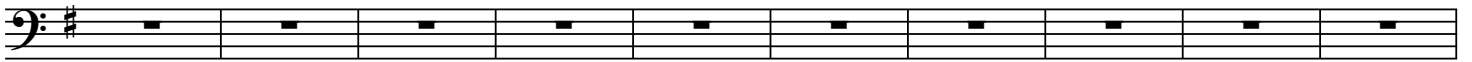
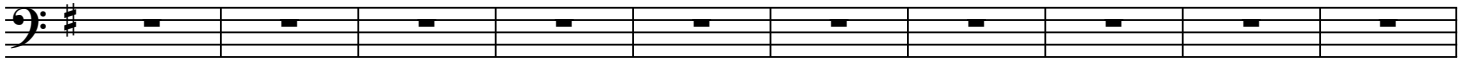
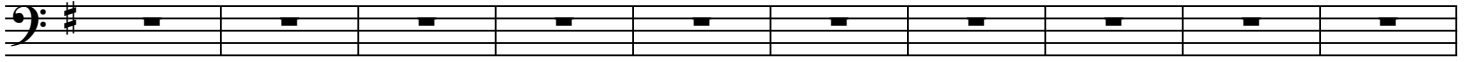
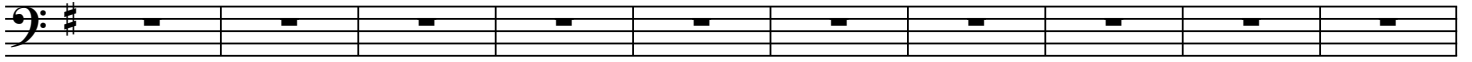
Mendelssohn: Octet: Movt I: Allegro

Three systems of musical notation for the cello part of Mendelssohn's Octet, Movement I. The first system is in bass clef with a key signature of one sharp (F#) and a 2/4 time signature, starting with a forte (*f*) dynamic. The second system continues with a fortissimo (*ff*) dynamic and features sixteenth-note passages with fingerings (1, 4, 3, 3, 2, 4, 4, 2, 4, 4). The third system continues with similar rhythmic patterns and fingerings (2, 3, 3, 4, 4, 4, 4, 4, 4, 4, 4).

Beethoven Piano Concerto N° 4 Movt III

Two systems of musical notation for the cello part of Beethoven's Piano Concerto No. 4, Movement III. The first system is in bass clef with a key signature of two flats (Bb, Eb) and a 2/4 time signature, starting with a fortissimo (*ff*) dynamic. The second system continues with a forte (*f*) dynamic and features sixteenth-note passages with fingerings (1, 1, 1, 1, 1, 1, 1, 1, 1, 1, 1, 1).

2 Fast Playing: REPERTOIRE EXCERPTS: Scalic, with some string crossings (cont.)



The image displays a page of musical notation for cello, consisting of 12 staves. Each staff begins with a bass clef and a key signature of one sharp (F#). The notation is a continuous scale exercise, with each staff containing ten measures of music. The notes are represented by short horizontal dashes on the staff lines, indicating the pitch and position of the notes. The exercise is designed for fast playing and includes some string crossings.

4 Fast Playing: REPERTOIRE EXCERPTS: Scalic, with some string crossings (cont.)

