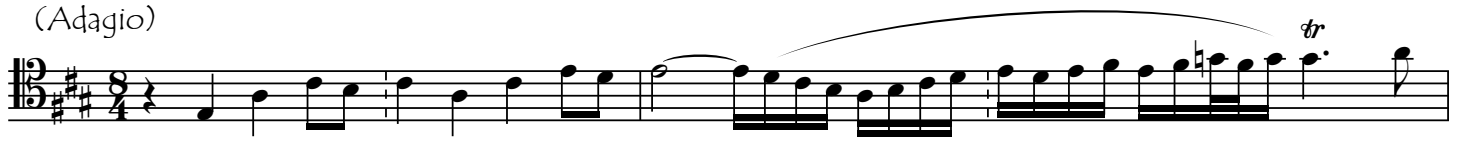


Bach: Sonata for Violin and Harpsichord N° 3 BWV 1016: Movt I
FOR CELLO: TRANSPosed DOWN A FIFTH INTO A MAJOR: LITERAL TRANSCRIPTION
WRITTEN OUT IN DOUBLETIME (EACH NOTE TWICE AS LONG AS IN BACH'S ORIGINAL)

by cellofun.eu

(Adagio)



Musical score for Cello, measures 19-33. The score is written in treble clef with a key signature of two sharps (F# and C#) and a time signature of 2/2. The music features various rhythmic patterns, including eighth and sixteenth notes, and rests. Trills (tr) are indicated above certain notes. A double bar line is present at the end of measure 33.

Measures 19-20: Treble clef, two sharps. Measure 19 starts with a trill on G4. Measure 20 has a trill on A4.

Measures 21-24: Treble clef, two sharps. Measure 21 has a trill on G4. Measure 22 has a trill on A4. Measure 23 has a trill on B4. Measure 24 has a trill on C5.

Measures 25-26: Bass clef, two sharps. Measure 25 has a trill on G3. Measure 26 has a trill on F#3.

Measures 27-29: Bass clef, two sharps. Measure 27 has a trill on E3. Measure 28 has a trill on D3. Measure 29 has a trill on C3.

Measures 30-32: Bass clef, two sharps. Measure 30 has a trill on B2. Measure 31 has a trill on A2. Measure 32 has a trill on G2.

Measure 33: Bass clef, two sharps. Measure 33 has a trill on F#2.