

Mini-Studies For Discovering The Influence of Bow Direction In Fast Separate-Bow String Crossings Across Two Strings: ESPECIALLY FOR SPICCATO

Ex 1: Scalic: No shifts. All crossings in favourable direction

by cellofun.eu



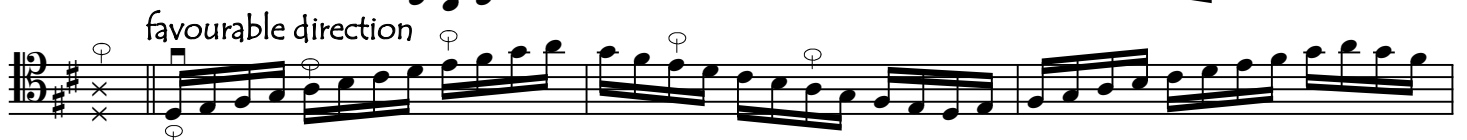
All crossings in favourable direction



All crossings in unfavourable direction



All crossings in favourable direction



favourable direction



unfavourable direction



favourable



unfavourable



favourable but upbow on beat



Ex 2: Arpeggios (more frequent crossings). Good for wrist strength and mobility.

All crossings in favourable direction

all unfavourable

all favourable

all unfavourable

favourable

unfavourable

favourable

unfavourable

The first section consists of eight staves of music. Each staff contains a sequence of arpeggios. The first four staves are in C major (one sharp), and the last four are in C minor (no sharps or flats). The labels 'all unfavourable' and 'all favourable' are placed above the first four staves respectively. The notation includes various bowing marks such as 'v' (downbow), 'V' (upbow), and '°' (accents).

Slightly more difficult (faster crossings) variant of Ex 2

favourable

unfavourable

favourable

unfavourable

favourable

unfavourable

favourable

unfavourable

The second section consists of eight staves of music, similar to the first but with faster crossings. The first four staves are in C major, and the last four are in C minor. The labels 'favourable' and 'unfavourable' are placed above the first four staves respectively. The notation includes various bowing marks such as 'v' (downbow), 'V' (upbow), and '°' (accents).

Ex 2B: All fastest crossings in favourable direction, downbow always on beat

Exercise 2B consists of six staves of music in bass clef. The first staff begins with a circled 'o' above the first measure. The second staff has a circled 'o' above the first measure. The third staff has a circled 'o' above the first measure. The fourth staff has a circled 'o' above the first measure, a '1' above the second measure, a '4' above the fourth measure, and a circled 'o' above the fifth measure. The fifth staff has a circled 'o' above the first measure, a '4' above the second measure, a '2' above the third measure, and a circled 'o' above the fourth measure. The sixth staff has a circled 'o' above the first measure, a '4' above the second measure, a '4' above the third measure, a '3' above the fourth measure, and a circled 'o' above the fifth measure. The music features various string crossings and bowing patterns, with downbow strokes consistently on the beat.

Ex 2C: All fastest crossings in unfavourable direction but downbow on beat

Exercise 2C consists of six staves of music in bass clef. The first staff begins with a circled 'o' above the first measure. The second staff has a circled 'o' above the first measure. The third staff has a circled 'o' above the first measure, a '1' above the second measure, and a '4' above the fourth measure. The fourth staff has a circled 'o' above the first measure. The fifth staff has a circled 'o' above the first measure. The sixth staff has a circled 'o' above the first measure, a 'V' above the second measure, a 'V' above the third measure, and a circled 'o' above the fifth measure. The music features various string crossings and bowing patterns, with downbow strokes consistently on the beat.

Ex 2C with reverse bowings: All fastest crossings in favourable direction but upbow now on beat

Exercise 2C with reverse bowings consists of three staves of music in bass clef. The first staff begins with a circled 'o' above the first measure. The second staff has a circled 'o' above the first measure. The third staff has a circled 'o' above the first measure, a '1' above the second measure, and a '4' above the fourth measure. The music features various string crossings and bowing patterns, with upbow strokes consistently on the beat.



Ex 2D: Mixed directions: favourable crossing directions upwards, unfavourable direction down



Ex 2E: Mixed directions going up, favourable coming down

