

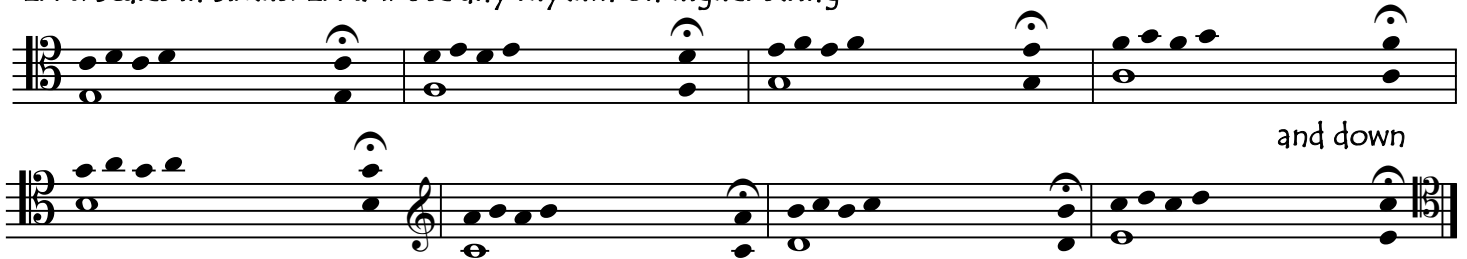
Samefinger Stepwise Tonal Shifts (Scales) in Doublestops: All Regions

PRELIMINARY EXERCISES: ALL FINGERS IN EACH POSITION

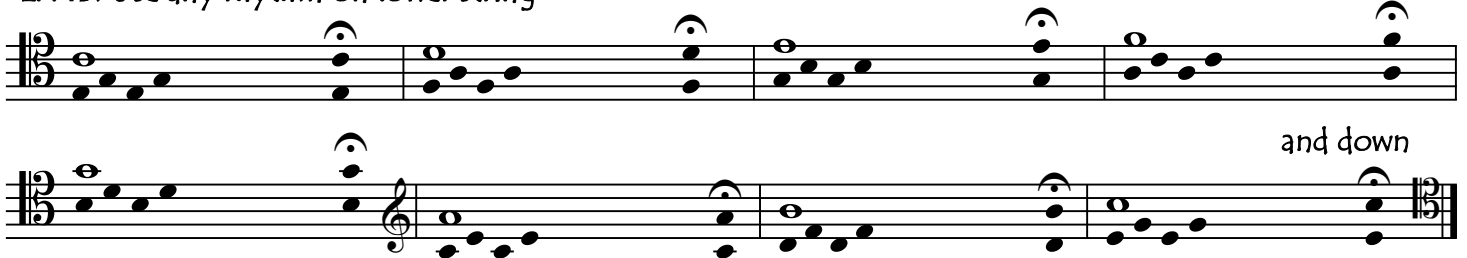
Can be played on any pair of strings, in different keys, with the thumb as the lowest finger, and as broken double stops

by cellofun.eu

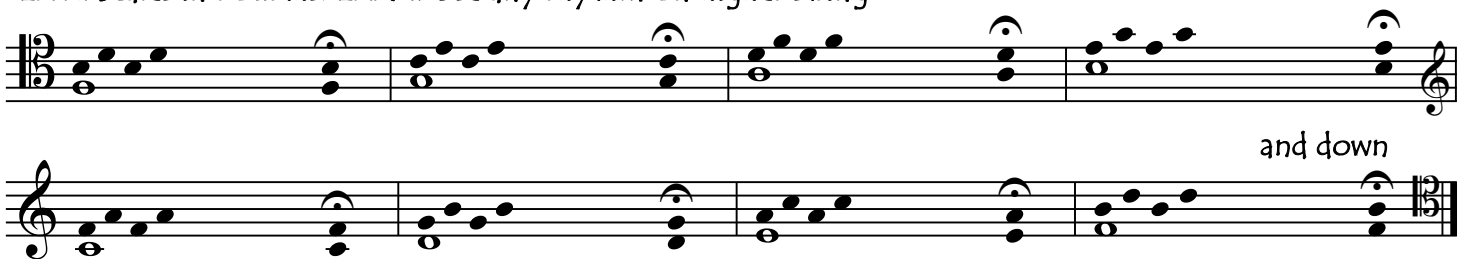
EX 1: Scales in Sixths. EX 1A: Use any rhythm on higher string



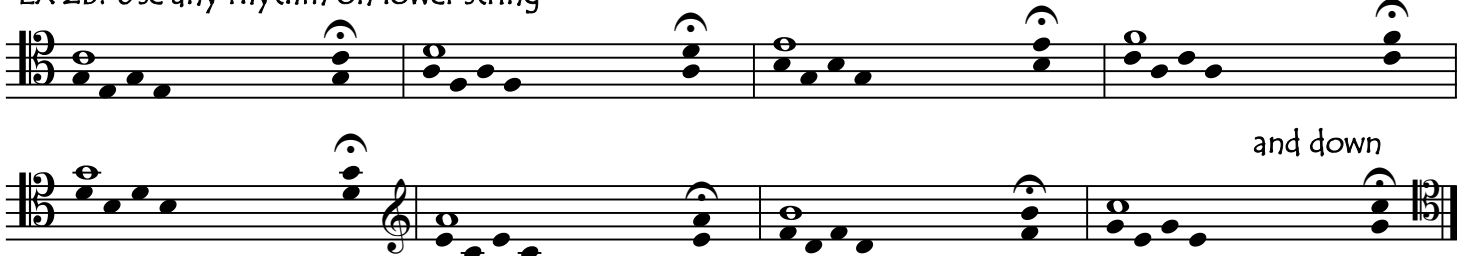
EX 1B: Use any rhythm on lower string



EX 2: Scales in Fourths. EX2A: Use any rhythm on higher string



EX 2B: Use any rhythm on lower string



EX 3: Scales in Thirds. EX 3A: Use any rhythm on higher string



EX 3B: Use any rhythm on lower string

