

Assisted Shifts: Exercises on Same String: All Regions (no thumb)

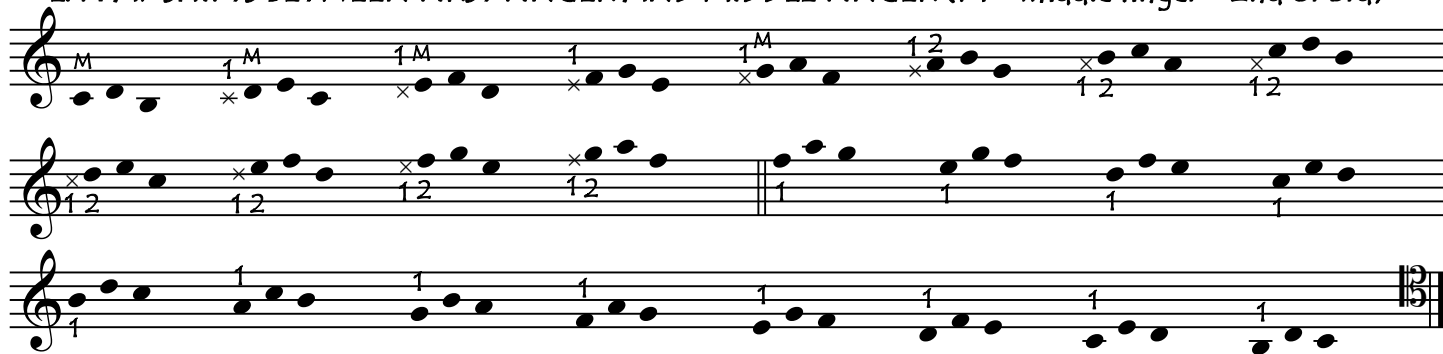
DO ALSO IN OTHER KEYS, ON OTHER STRINGS, AND WITH DIFFERENT RHYTHMS/BOWINGS

In Assisted Shifts we always have the question of "on which finger shall we shift"? In downwards shifts we usually shift on the "new" (lower) finger as it is already placed on the string before the shift. In upwards shifts we can choose between shifting on the "old" finger (for a clean articulated shift) or shifting on the "new" finger (for a smooth vocal shift). In the following exercises the intermediate notes (indicated with an x) always imply "clean" shifts as these are the most helpful for our positional sense. We can however practice all the exercises also with smooth vocal shifts, changing imperceptibly onto the new finger during the shift (and consequently with no intermediate note)

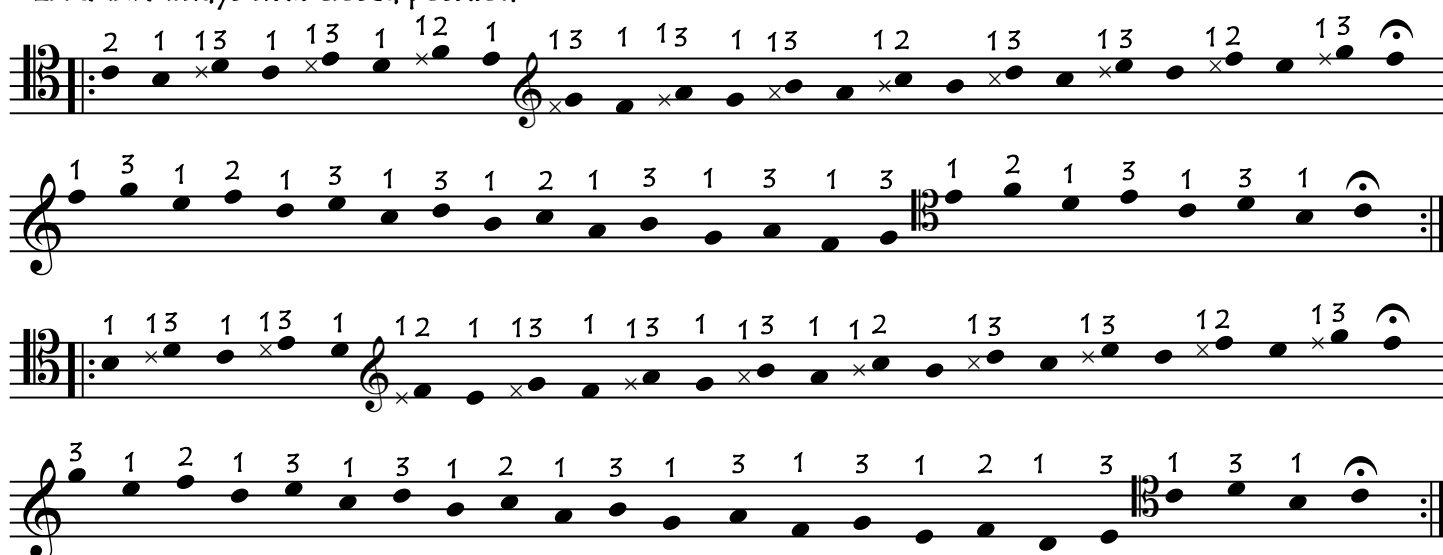
by cellofun.eu

EXERCISE 1: Hand shifts ONE scale step

EX 1 A: SHIFTS BETWEEN FIRST FINGER AND MIDDLE FINGER (M = middle finger = 2nd or 3rd)



EX 1A2: Always with closed position



EX 1A3: Always with second finger



The musical score for 'The Rose Tree' is presented in three systems. The first system begins with a bass clef and a 4/4 time signature. The melody is written on a single staff, featuring a sequence of eighth and quarter notes. The second system continues the melody, showing a change to a 3/4 time signature. The third system concludes the piece with a final cadence in bass clef. The score includes various musical notations such as clefs, time signatures, and note values.

[illegible]

The image displays a musical score for the song "The Rose Tree". It consists of four staves. The top two staves are vocal parts, and the bottom two are guitar accompaniment. The lyrics are written below the vocal staves. The guitar part includes specific notation for muted notes (M) and muted chords (x).

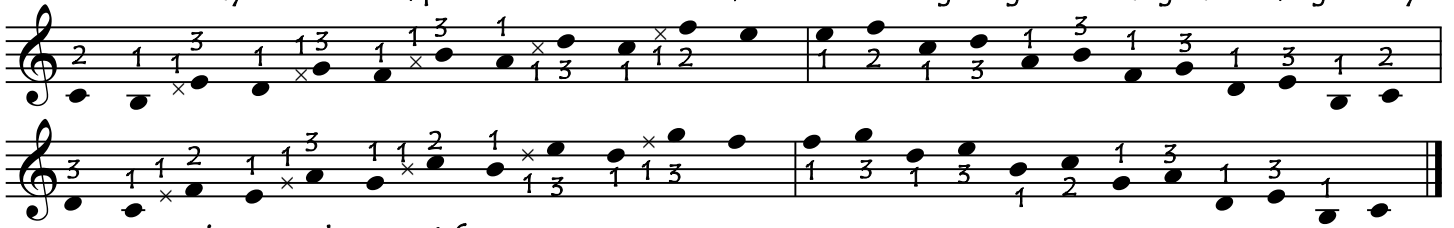
Staff 1 (Vocal 1): The melody starts on a whole note, followed by a half note, and then a quarter note. The lyrics "The rose tree" are aligned with these notes.

Staff 2 (Vocal 2): The melody starts on a whole note, followed by a half note, and then a quarter note. The lyrics "The rose tree" are aligned with these notes.

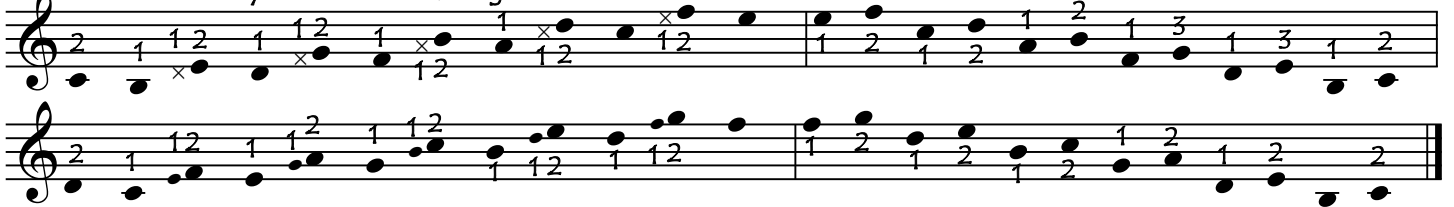
Staff 3 (Guitar 1): The accompaniment starts with a muted chord (x) and a muted note (M). The lyrics "The rose tree" are aligned with these notes.

Staff 4 (Guitar 2): The accompaniment starts with a muted chord (x) and a muted note (M). The lyrics "The rose tree" are aligned with these notes.

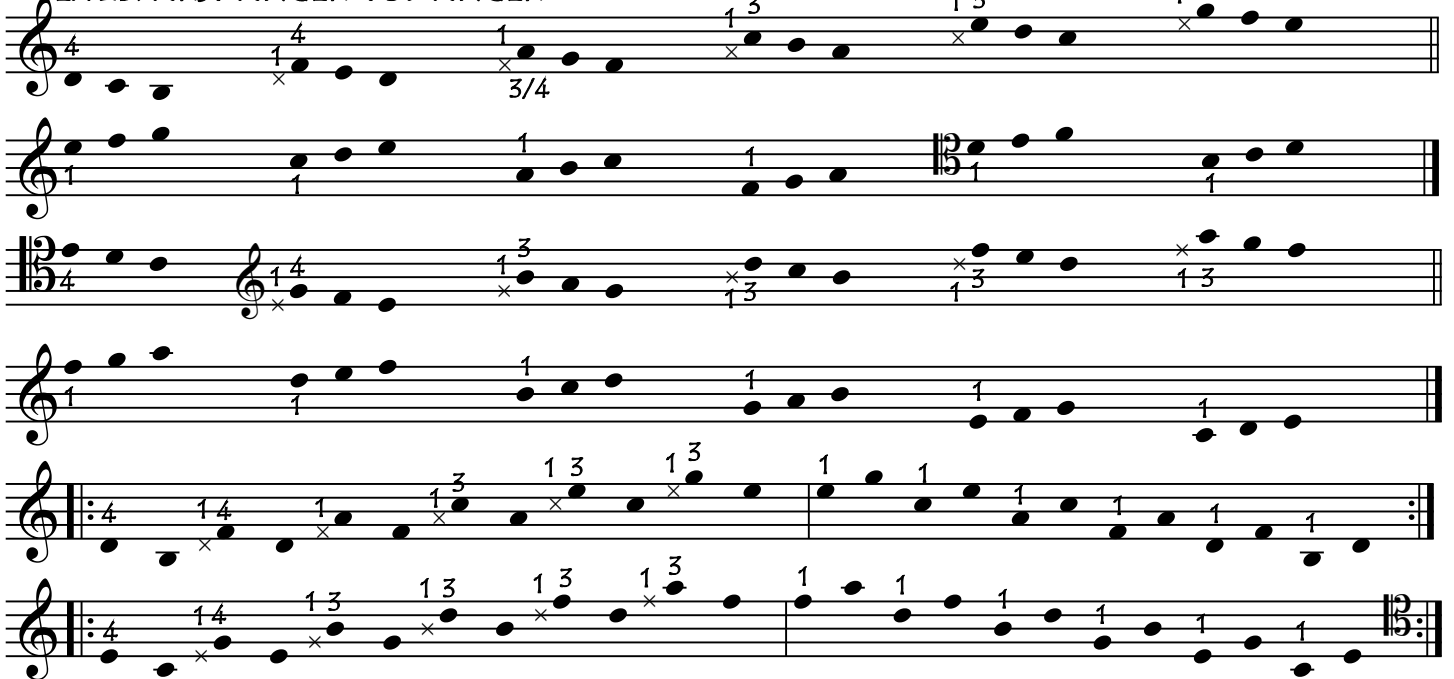
EX 2A2: Always with closed position (1-2 semitone, 1-3 tone): Fingerings will change according to key



EX 2A3: Always with second finger



EX 2B: FIRST FINGER-TOP FINGER



EX 2 C: MIDDLE FINGER-TOP FINGER

